

A woman in a black dress is sitting on a dark surface, possibly a table or floor, with a bottle and glasses. The scene is dimly lit, with a warm, golden light source on the right. In the foreground, a pair of hands is holding a bottle, partially obscuring the view. The overall mood is intimate and sophisticated.

giselle

MIAMI



the story

Curtains drawn, yet a warm breeze peels them open. Hazy light filters in across her face. The silk shirt? Sure, but even that feels like too much. A hint of perfume behind her neck, a final glance in the mirror. She is ready to shine.

She said to meet her on the rooftop. Would she be waiting? No, she prefers to make an entrance; everybody pretending not to notice that the air just got a little more – charged. A drink, of course. No ice, just a little too strong. Food from around the world, but she likes the taste of the ocean, the salt on her lips to start.

A beautiful, vibrant crowd stirring; long lost lovers, no longer strangers, friends for life or just for the night, still vibrating from the energy downstairs.

Giselle offers an elevated dining experience in a dazzling, panoramic setting in the heart of downtown Miami. She is sophisticated yet eclectic, seductively captivating, edgy, and extravagant. Blending Asian, Mediterranean and French-inspired cuisine, elevated cocktail programming, and exquisite design, Giselle serves up a journey to remember. Upon arrival, guests are transported in a private elevator up to the main entrance of the indoor-outdoor restaurant featuring a fully retractable roof, where they are invited to step into the sultry fantasy world of Giselle.

Step into the sultry fantasy world of Giselle







private soirées are better with her

Whether you're planning a corporate event, wedding, birthday celebration, or intimate cocktail soirée, we have the space and accommodations to create a perfectly magical event for your guests.

Giselle offers an elevated dining experience in a dazzling, panoramic setting in the heart of downtown Miami. Upon arrival, guests are transported in a private elevator up to the main mosaic-tiled tunnel entrance of the indoor-outdoor restaurant featuring a fully retractable roof, where they are invited to step into the sultry fantasy world of Giselle. Treat your guests to Asian, Mediterranean & French-inspired cuisine, elevated cocktails, exquisite design with supreme hospitality-driven service. The atmosphere is sure to be electric.

Giselle can accommodate parties of 31-200. If you're planning a more intimate event of 9-30 guests, email host@gisellemiami.com

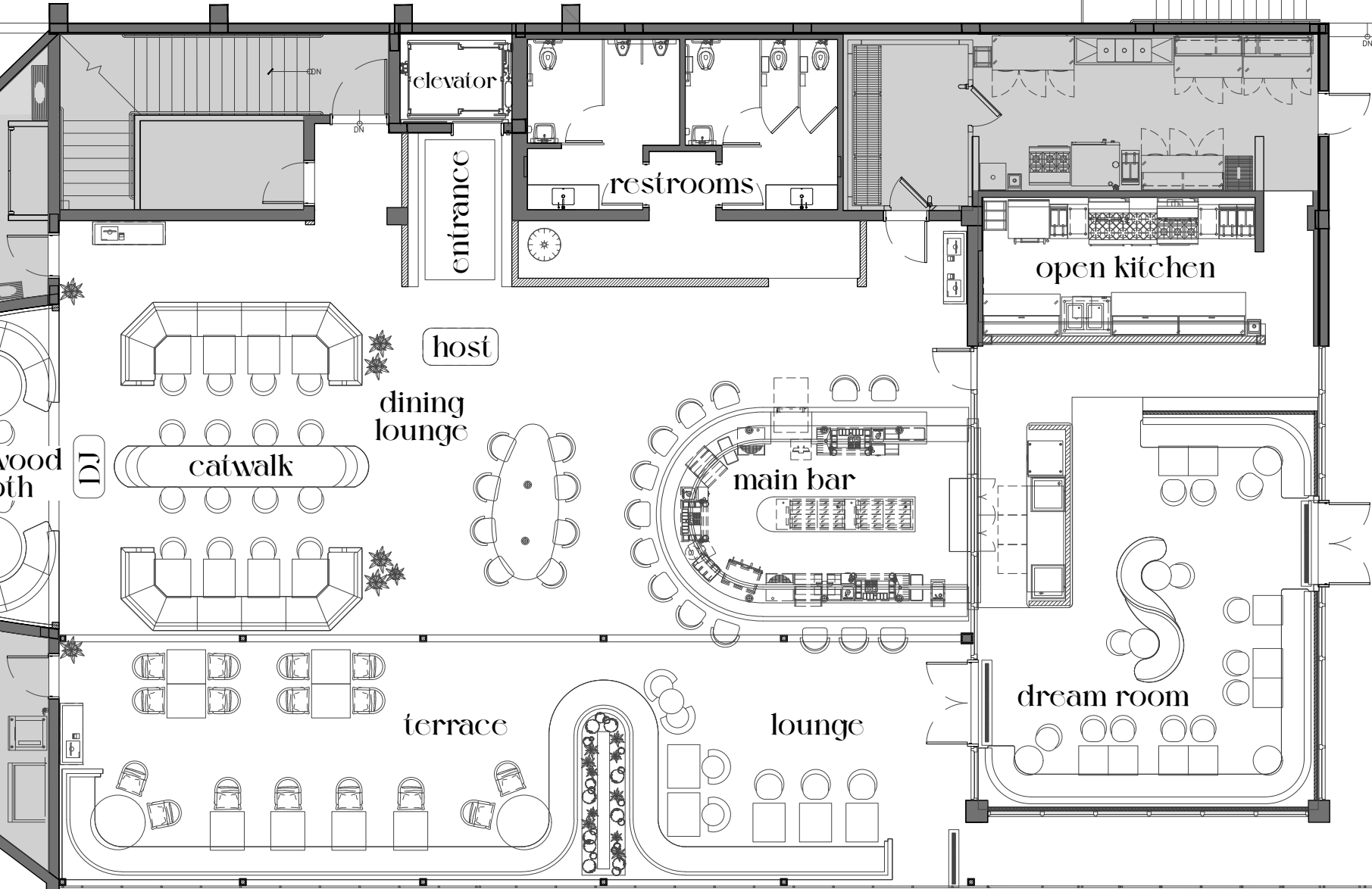
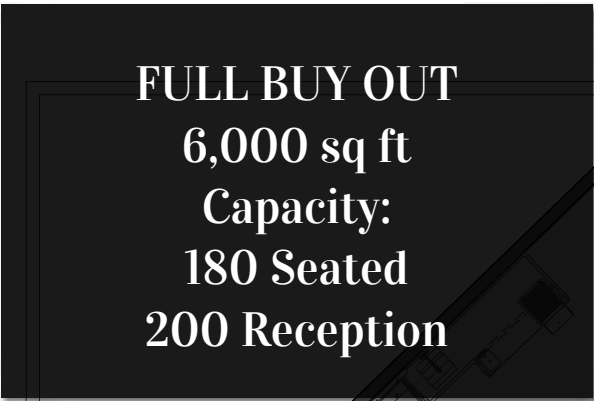
FULL BUY OUT

6,000 sq ft

Capacity:

180 Seated

200 Reception





I'll be here,
if by CHANCE,
you'll be too.

lounge

1,000 sq ft

Capacity: 24 Seated • 40-50 Reception



terrace

3,000 sq ft

Capacity: 40 Seated • 50 Reception



hollywood booth

1,500 sq ft

Capacity: 36 Seated



dream room

2,500 sq ft

Capacity: 40 Seated & Reception



A photograph of a restaurant interior. The scene is dimly lit, featuring several tables set with white tablecloths, dark napkins, and glassware. In the foreground, a round table is partially visible with a dark, fur-like chair. The background shows more tables and chairs, some with teal patterned upholstery. The walls are dark wood-paneled, and there are two square neon signs with pink and purple patterns. A large, white, circular pendant light hangs from the ceiling. The overall atmosphere is elegant and sophisticated.

capabilities

WI-FI • Complimentary

**AV CAPABILITIES • Audio and visual needs
available upon request**

PARKING & VALET • \$20 with Validation

PRIVATE ENTRANCE • Yes

FAQ's

FOOD AND BEVERAGE MINIMUM

A food & beverage minimum is defined as the total food & beverage sales, prior to venue fee, gratuity, service fee & tax. The minimums are based on date, time frame and the room size, not by the number of guests that are attending your event. If your total bill falls short of reaching the food & beverage minimum, the difference will be billed as a Venue fee.

DEPOSIT

A deposit in the amount of 50% of the Food & Beverage Minimum is due at the time of signing the Event Agreement and will be applied to the final bill.

SALES TAX & SERVICE FEES

All food and beverage prices are subject to a service charge of 22% (6% Banquet Service Charge and 16% Staff Gratuity). An 8% sales tax is applied on all food, beverage, venue fee and the banquet service charge. All additional charges incurred during the event will be charged to the credit card on file unless otherwise specified. If your group is tax exempt, you need to provide us with your DR-14 form when sending in the contract.

MENU SELECTIONS

Menus must be selected ten business days prior to your event. If menu selections are not received by this deadline, chef's choice will apply.

DIETARY RESTRICTIONS

We are happy to accommodate a wide range of special dietary needs and restrictions. Prior to signing off on your Banquet Event Order, please specify restrictions with your Event Manager.

CHEF ATTENDANT

All action stations require a chef attendant. One chef attendant can assist up to 50 guests. The chef attendant fee is \$200 per attendant.

FAQ's

DECORATIONS

Giselle Miami may be able to accommodate access to decorate an Event for more than one (1) hour prior to an Event Start Time for a fee of \$150.00. Decorators must comply with the following decoration policies: Absolutely no tape, staples or nails on or in walls. No glitter; confetti (including confetti balloons); or wax candles are allowed to be used. In the event that such materials are used which cause damage, a fee will be applied toward the final bill ("Damage Fee"). Due to storage limitations, no items may be delivered prior to set up on the day of the Event. Giselle Miami will provide standard room set up which includes tables, chairs, napkins, silverware, and glassware. Giselle Miami does not provide any custom décor or linens.

PARKING

Valet services are available, Valet is \$20 per vehicle.

FINAL GUARANTEED GUEST COUNT

A guaranteed guest count is required no later than 3 business days prior to the date of the event. This number will be considered the guarantee not subject to change. If no guarantee is received, Giselle Miami will use the number of guests estimated on the original contract at the time of the booking. There are no exceptions concerning this guarantee & the guarantee must be emailed to the Event Coordinator and/or events@therestaurantpeople.com.

CANCELLATION POLICY

Cancellation of an Event must be given in writing and received by a manager at a minimum of fourteen (14) calendar days prior to the Event date in order to receive 50% reimbursement of the original Event deposit amount. The deposit is NOT refundable if the Event is cancelled with less than fourteen (14) calendar days prior to the Event date. If the Event is canceled with less than three (3) business days prior to the Event, the client shall be charged 100% of the estimated cost of the Event plus all fees.

contact

To plan your Private Soirée

please contact

our Events Team:

events@therestaurantpeople.com

954.525.9001



15 NE 11th St • Miami, FL 33132

www.gisellemiami.com • [@giselle.miami](https://www.instagram.com/giselle.miami)

